



Grassland Way

Buckingham Fields, Northampton

oriordanbond
SALES & LETTINGS



Grassland Way

Buckingham Fields
NN4 8UA

OFFERS OVER £300,000

A four bedroom detached family home, built by Messrs Watermeadow Homes, in this sought after location close to Delapre Park. The development is conveniently located approximately 1.5 miles south of the town centre with a wide range of amenities close at hand including Tesco Mereway Shopping Centre and excellent schools including the highly rated Wootton Park School.

The accommodation comprises entrance hall, cloakroom/WC, fitted kitchen, large sitting/dining room, first floor landing, master bedroom with en-suite shower room, three further bedrooms and a family bathroom. The property benefits from uPVC double glazing, gas radiator heating and off road parking. There is an open plan front garden and enclosed rear garden. (A/981/M)

Additional information

- Council Tax Band: D
- Energy Efficiency Rating: B

Viewing

Viewing strictly by appointment – details below

Disclaimer

O'Riordan Bond Estate Agents Limited has not tested apparatus, equipment, fittings or services and so cannot verify they are in working order. The buyer is advised to obtain verification from their solicitor or surveyor.

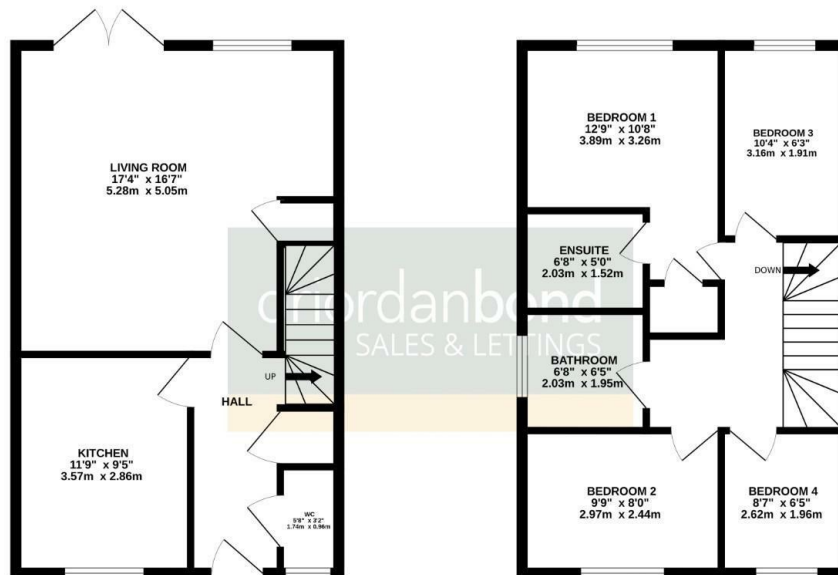
O'Riordan Bond Far Cotton Sales
01604 706007

farcotton@oriordanbond.co.uk



GROUND FLOOR
490 sq.ft. (45.5 sq.m.) approx.

1ST FLOOR
490 sq.ft. (45.5 sq.m.) approx.



TOTAL FLOOR AREA: 981 sq.ft. (91.1 sq.m.) approx.

Whilst every attempt has been made to ensure the accuracy of the floorplan contained here, measurements of doors, windows, rooms and any other items are approximate and no responsibility is taken for any error, omission or mis-statement. This plan is for illustrative purposes only and should be used as such by any prospective purchaser. The services, systems and appliances shown have not been tested and no guarantee as to their operability or efficiency can be given.

Made with Metreapp 02/26